



Tradewind VA



Flight Briefing Package

TCC910D KMEM-KSFO

24-Aug-2019 #1

RELEASE #1

MEMPHIS INTL
(UNITED STATES)

-

SAN FRANCISCO INTL
(UNITED STATES)

PREPARED BY CHRISTIAN BREUER (TCA2984)

CHRISTIAN@TCA-CHARTER.DE

24 AUG 0819 UTC

Fuel Planning (lb)	US DOMESTIC	Fuel	Time
TRIP		33.160	03:34
HOLD	KSFO	2.462	00:20
ALTN	KOAK	1.523	00:08
FAR RSV		6.373	00:45
CONT		708	00:05
MIN T/O		44.226	04:52
EXTRA		1.846	00:15
TAXI		1.325	00:25
RELEASE	KMEM	47.397	05:32
ARR FUEL	KSFO	12.700	01:29

Load Planning (lb)	N78901	Plan	Limit
Empty Weight		288.021	
Zero Fuel Weight	Limit	288.021	400.000
Fuel		47.397	218.676
Ramp Weight		335.418	547.000
Take-Off Weight KMEM		334.093	545.000
Landing Weight KSFO		300.933	425.000
Underload		111.979	Lim ZFW
Max Extra Fuel		124.067	Lim CAP

Cost Planning		
Flight Time	03:34\$	17.967
Fuel	34.697\$	12.359
Total		\$ 30.326

TRADEWIND ALASKA FLIGHTPLAN - IFR TCC910D N78901 KMEM-KSFO

 ALL WEIGHTS IN POUNDS (LB) STD 24AUG/1220Z

OPF 1 - PREPARED 24AUG/0819Z BY CHRISTIAN BREUER (TCA2984) CHRISTIAN@TCA-CHARTER.DE

TR910D/TCC910D N78901/B789-1B74-75 SEL/AHBF ROUTE: KMEMKSFO01

DEP: KMEM/MEM 18C ELEV 341 FT COST INDEX: 200 TTL G/C DIST: 1568 NM
 ARR: KSFO/SFO 28L ELEV 13 FT INIT ALT: FL430 TTL F/P DIST: 1584 NM
 FUEL BIAS: 100.0% TTL AIR DIST: 1661 NM
 AVG WIND CMP: HD022 KT

ALT: KOAK/OAK 30 ELEV 9 FT 20 NM

CONFIG	DOW	PAX	CARGO	TOTAL	ULOAD LIM	ZFW	TOW	LDW
STANDARD	288021	0	0	0	111979 ZFW	MAX 400000	545000	425000
						PLN 288021	334093	300933
						ACT

	FUEL	CORR	ENDUR	
TRIP	33160	03:34	
ALTN KOAK	1523	00:08	
FAR RSV	6373	00:45	
HOLD	2462	00:20	
CONT	708	00:05	
MIN T/O	44226	04:52
EXTRA	1846	00:15	CAPTAINS SIGNATURE (....)
TAXI	1325	00:25	
RELEASE	47397	05:32	I ACCEPT THIS OPF AND I AM FAMILIAR
ARR FUEL	12700	01:29	WITH THE PLANNED ROUTE AND AERODROMES

FUEL TANK CAP 218676 LB / MAX EXTRA FUEL 125913 LB LIM BY CAPACITY
 TRIP CORR FOR 10000 LB TOW INCR: +752 LB / 10000 LB TOW DECR: -617 LB
 2000 FT LOWER: +644 LB / EET 03:32 CLB: 250/310/85 DES: 85/310/250

 KMEM STD 12:20Z/07:20L ETD 12:20Z ACT OFBL EST T/O 12:45Z ACT T/O
 KSFO STA 16:25Z/09:25L ETA 16:23Z ACT ONBL EST LDG 16:19Z ACT LDG
 SKD 04:05 PLN 04:03 TTL BLCK EST FLT 03:34 TTL FLT

ATC ROUTE: N0486F430 ELVIS4 WTW00 DCT FSM DCT OKM DCT LBL DCT TBE DCT ALS DCT
 DVC DCT MLF J80 ILC DCT RUMPS DCT OAL MOD9

ALTERNATE PLANNING

ALTN/RWY	DIST	ALT/FL	MSA	COMP	TIME	FUEL	DIFF	ROUTE
KOAK/30	20	3000	061	TL004	00:08	1523	-	SFO DCT OAK

MOST CRITICAL MORA 16500 FT AT ALS

AWY	WAYPOINT	MT	ALT	MSA	FREQ	TAS	LEG	FUEL	REM / USED	LEG	ACC
-FIR	NAME		ISA	WND/SPD	GS	REM	POSITION		ETO / ATO		
	KMEM/18C		341	026				46.1 / 1.3			
	MEMPHIS INTL					1584	N3503.3 W08958.6/.....			
ELVIS4	MEM	190	*CLB	026	117.50	2	45.3 / 2.2	01 00.01			
	MEMPHIS			P07	060/009	1581	N3500.9 W08959.0/.....			
ELVIS4	WTW00	273	*CLB	032		41	42.0 / 5.5	07 00.08			
				P15	254/015	1541	N3501.5 W09048.6/.....			

DCT	*TOC	279	FL430	037	486	104	38.2 / 9.2	14	00.22	
			M06	269/042	444	1436	N3515.5 W09254.9/.....		
	KOKC	277	FL430	046		59	37.1 / 10.3	08	00.30	
			M05	258/043		1377	N3522.4 W09406.6/.....		
DCT	FSM	275	FL430	046	110.40	485	8	36.9 / 10.5	01	00.31
	FORT SMITH		M06	263/041	443	1369	N3523.3 W09416.3/.....		
DCT	*BDRY	282	FL430	046		485	37	36.2 / 11.2	05	00.36
	-KZFW		M06	260/040	446	1332	N3531.9 W09500.1/.....		
DCT	OKM	281	FL430	038	114.90	485	43	35.3 / 12.1	05	00.41
	OKMULGEE		M05	258/040	448	1289	N3541.6 W09552.0/.....		
DCT	*BDRY	287	FL430	038		485	17	35.0 / 12.4	03	00.44
	-KZKC		M05	257/039	449	1272	N3547.2 W09611.2/.....		
DCT	LBL	287	FL430	052	112.30	491	243	30.4 / 17.0	31	01.15
	LIBERAL		M01	238/027	471	1029	N3702.7 W10058.3/.....		
	KDEN	271	FL430	053		45		29.6 / 17.8	06	01.21
			M00	293/024		984	N3707.6 W10154.0/.....		
DCT	*BDRY	270	FL430	066		491	18	29.2 / 18.2	02	01.23
	-KZAB		M00	277/021	470	966	N3709.5 W10216.8/.....		
DCT	*BDRY	269	FL430	099		492	52	28.3 / 19.1	07	01.30
	-KZDV		M00	301/026	469	914	N3714.5 W10321.5/.....		
DCT	TBE	268	FL430	099	111.20	491	12	28.0 / 19.4	01	01.31
	TOBE		M01	303/027	467	902	N3715.5 W10336.0/.....		
DCT	ALS	266	FL430	165	113.90	490	106	26.1 / 21.3	14	01.45
	ALAMOSA		M02	319/034	466	796	N3721.0 W10548.9/.....		
DCT	DVC	273	FL430	165	114.60	488	151	23.2 / 24.2	20	02.05
	DOVE CREEK		M04	326/034	464	645	N3748.5 W10855.9/.....		
	KLAS	271	FL430	165		56		22.2 / 25.2	07	02.12
			M06	321/032		590	N3758.8 W11005.1/.....		
DCT	*BDRY	270	FL430	139		393	16	21.9 / 25.5	02	02.14
	-KZLC		M05	327/031	374	574	N3801.6 W11024.6/.....		
DCT	MLF	270	FL430	144	112.10	487	125	19.7 / 27.7	16	02.30
	MILFORD		M05	326/033	464	450	N3821.6 W11300.8/.....		
J80	ILC	253	FL430	153	116.30	486	65	18.5 / 28.9	08	02.38
	WILSON CREEK		M06	327/028	472	384	N3815.0 W11423.7/.....		
DCT	RUMPS	256	FL430	153		486	136	16.1 / 31.3	18	02.56
	-KZOA		M06	327/024	474	248	N3807.2 W11716.3/.....		
DCT	OAL	241	FL430	143	117.70	486	25	15.6 / 31.8	03	02.59
	COALDALE		M06	328/022	479	223	N3800.2 W11746.2/.....		
	KSFO	250	FL430	165		34		15.0 / 32.4	04	03.03
			M06	325/019		189	N3755.6 W11829.5/.....		
MOD9	INYOE	249	FL430	165		486	13	14.8 / 32.6	02	03.05
			M06	327/020	477	176	N3753.7 W11845.9/.....		
MOD9	KYLLA	249	FL430	165		486	29	14.3 / 33.1	03	03.08

				M06 326/019 478 147	N3749.6 W11922.1/.....		
MOD9	*TOD	249	FL430 153	486 10	14.1 / 33.3	02 03.10		
			M06 326/018 478 137	N3748.1 W11934.2/.....			
MOD9	TROSE	249	*DES 153	40	13.9 / 33.5	04 03.14		
			P12 324/012	97	N3742.0 W12024.3/.....		
MOD9	MOD	248	*DES 093 114.60	27	13.8 / 33.6	04 03.18		
	MODESTO		P18 302/008	70	N3737.7 W12057.5/.....		
MOD9	LEEFF	249	*DES 093	8	13.8 / 33.6	01 03.19		
			P19 317/006	62	N3736.5 W12107.5/.....		
MOD9	GROAN	249	*DES 066	8	13.7 / 33.7	01 03.20		
			P18 264/002	54	N3735.4 W12117.1/.....		
MOD9	CEDES	249	*DES 066	16	13.6 / 33.8	03 03.23		
			P18 184/006	38	N3733.1 W12137.5/.....		
MOD9	ARCHI	240	*DES 066	12	13.5 / 33.9	03 03.26		
			P17 191/007	26	N3729.5 W12152.5/.....		
MOD9	MEHTA	240	*DES 066	6	13.4 / 34.0	01 03.27		
			P16 193/009	20	N3727.7 W12159.8/.....		
MOD9	KSFO/28L	285	13 066	20	12.9 / 34.5	07 03.34		
	SAN FRANCISCO INTL				N3736.7 W12221.6/.....		

WIND INFORMATION - OBS 24/AUG 00:00

(CLIMB) **FSM** **OKM** **LBL**
FL420 277/044 -61 FL470 264/033 -65 FL470 258/030 -64 FL470 254/023 -60
FL340 271/029 -42 FL450 264/040 -65 FL450 258/038 -64 FL450 250/030 -59
FL250 254/018 -20 FL430 264/042 -62 FL430 258/041 -62 FL430 239/028 -57
17000 262/011 -5 FL410 263/042 -59 FL410 258/043 -59 FL410 222/024 -56
8000 213/005 +10 FL390 262/042 -55 FL390 258/045 -55 FL390 200/024 -54

TBE **ALS** **DVC** **MLF**
FL470 297/019 -60 FL470 320/024 -61 FL470 319/025 -63 FL470 321/023 -65
FL450 298/023 -59 FL450 321/032 -60 FL450 319/031 -63 FL450 321/029 -64
FL430 304/028 -57 FL430 320/035 -59 FL430 327/034 -61 FL430 327/033 -62
FL410 309/034 -55 FL410 318/037 -57 FL410 336/038 -58 FL410 333/038 -59
FL390 313/040 -53 FL390 316/040 -55 FL390 344/043 -56 FL390 339/044 -56

RUMPS **(DESCENT)**
FL470 327/020 -66 FL420 323/015 -61
FL450 326/024 -65 FL340 326/010 -43
FL430 328/025 -62 FL250 298/009 -18
FL410 331/024 -59 17000 318/005 -0
FL390 334/024 -56 8000 183/013 +16

END FLIGHTPLAN 03391 TCC910D N78901 KMEM-KSFO 24AUG2019

[ATC FLIGHTPLAN]

(FPL-TCC910D-IS
-B789/H-SABDE1FGHIJ2J3J4J5KP1P2P3RWXYZ/HB2U2V2D1G1
-KMEM1220
-N0486F430 ELVIS4 WTW00 DCT FSM DCT OKM DCT LBL DCT TBE DCT ALS
DCT DVC DCT MLF J80 ILC DCT RUMPS DCT OAL MOD9
-KSF00334 KOAK
-PBN/A1B1C1D1L101S1 NAV/RNVD1E1A1 DOF/190824 REG/N78901
EET/KZFW0036 KZKC0044 KZAB0123 KZDV0130 KZLC0214 KZOA0256
SEL/AHBF CODE/AAB467 RVR/75 OPR/TRADEWIND ALASKA
ORGN/PANCTAAP PER/D
RMK/TCAS
-E/0507)

[PLANNING WEATHER]

ORIGIN: KMEM/MEM (MEMPHIS INTL, UNITED STATES)

UTC -05:00

KMEM 240754Z 10004KT 10SM FEW044 25/23 A3002 RMK A02 SLP160 T02500228
KMEM 240645Z 2407/2512 VRB04KT P6SM VCSH SCT100 BKN250
TEMPO 2407/2409 BKN035 OVC080
FM240900 VRB03KT P6SM VCSH SCT009 OVC015
TEMPO 2409/2413 BKN009
FM241600 06005KT P6SM SCT015 BKN025 OVC040
FM241900 06008KT P6SM VCTS BKN035CB BKN080 BKN250
FM250100 VRB04KT P6SM VCSH SCT070 BKN120 BKN250

DESTINATION: KSFO/SFO (SAN FRANCISCO INTL, UNITED STATES)

UTC -07:00

KSFO 240656Z 30005KT 10SM FEW008 18/13 A2986 RMK A02 SLP111 T01780133
KSFO 240532Z 2406/2512 29005KT P6SM SCT008
FM241200 20004KT P6SM BKN008
FM241600 33006KT P6SM FEW010
FM242100 30016KT P6SM FEW011
FM250300 29010KT P6SM FEW008
FM250900 29008KT P6SM SCT008

ALTERNATE: KOAK/OAK (METRO OAKLAND INTL, UNITED STATES)

UTC -07:00

KOAK 240753Z 36004KT 10SM FEW014 17/14 A2988 RMK A02 SLP116 T01670139
402610156
KOAK 240532Z 2406/2512 29008KT P6SM FEW010
FM240800 29005KT P6SM BKN008
FM241700 27007KT P6SM FEW010
FM242100 30015KT P6SM FEW010
FM250300 29010KT P6SM FEW010
FM250900 29008KT P6SM SCT010

ADEQUATE: KOKC/OKC (WILL ROGERS WORLD, UNITED STATES)

UTC -05:00

KOKC 240752Z 12004KT 10SM BKN200 22/21 A2998 RMK A02 SLP136 T02170211
KOKC 240520Z 2406/2506 10008KT P6SM SCT012 BKN250
TEMPO 2412/2416 BKN012
FM241700 13010KT P6SM SCT040 SCT250

ADEQUATE: KDEN/DEN (DENVER INTL, UNITED STATES)

UTC -06:00

KDEN 240753Z 08011G18KT 10SM FEW180 BKN220 17/08 A3008 RMK A02 SLP100
T01720083
KDEN 240540Z 2406/2512 18014G21KT P6SM FEW120 BKN200
FM241200 29008KT P6SM FEW200
FM241700 04010KT P6SM FEW100
FM250000 14008KT P6SM SCT100
FM250400 22011KT P6SM SKC

ADEQUATE: KLAS/LAS (MC CARRAN INTL, UNITED STATES)

UTC -07:00

KLAS 240656Z 15005KT 10SM CLR 32/06 A2986 RMK A02 SLP078 T03220061

KLAS 240525Z 2406/2512 20009KT P6SM FEW250

FM241100 VRB06KT P6SM SKC

FM241800 16010KT P6SM FEW250

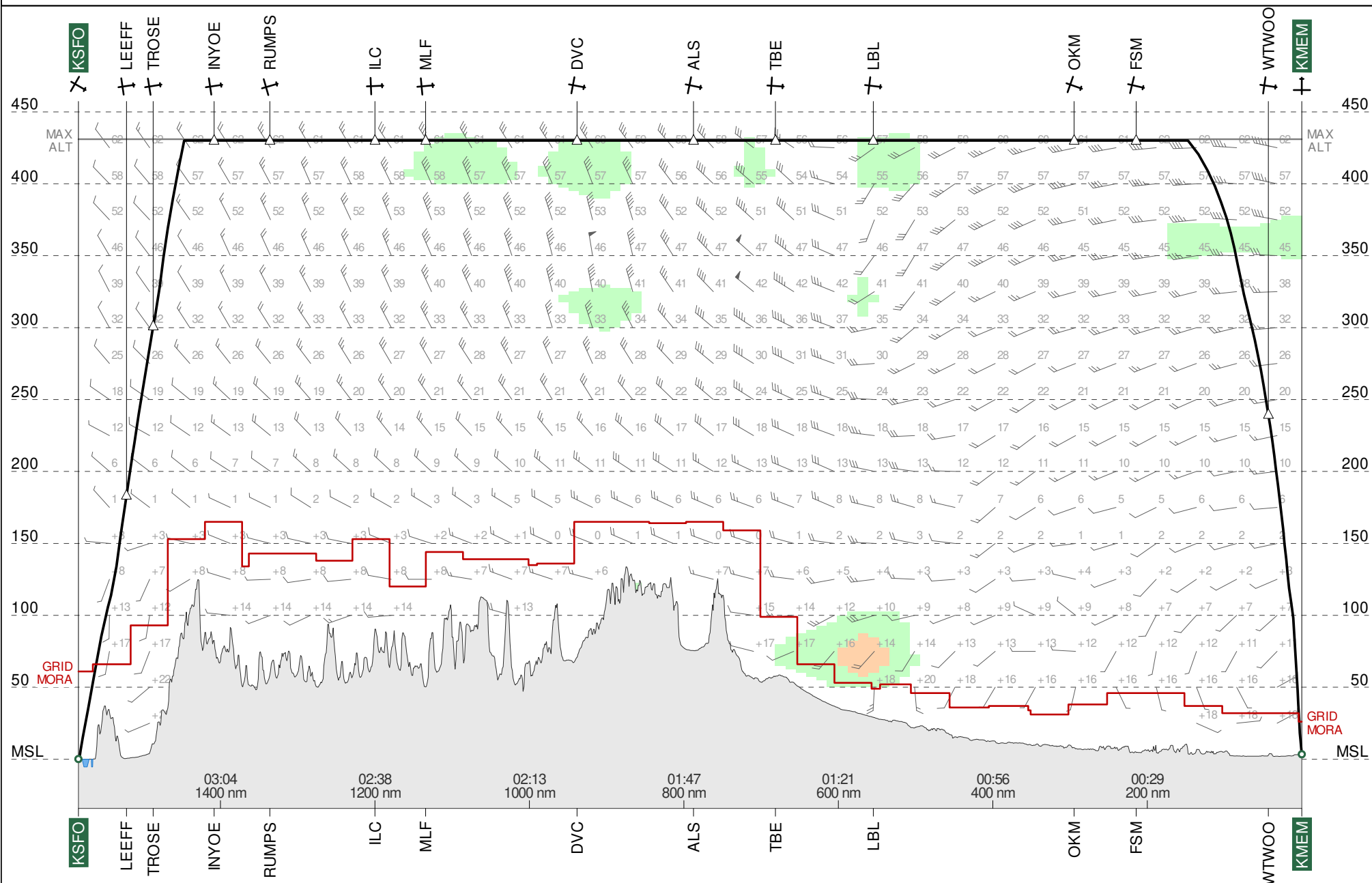
FM242300 20011G20KT P6SM FEW250

FM250300 19008KT P6SM FEW250

TR910D #1

KSFO ← — KMEM

ETD 24 Aug 12:20z
N78901 B789



Route Chart
TR910D #1
KMEM-KSFO

24 Aug 2019
N78901 B789

Lambert Conical Projection
Standard Parallels: 36N and 37N



Wind Chart

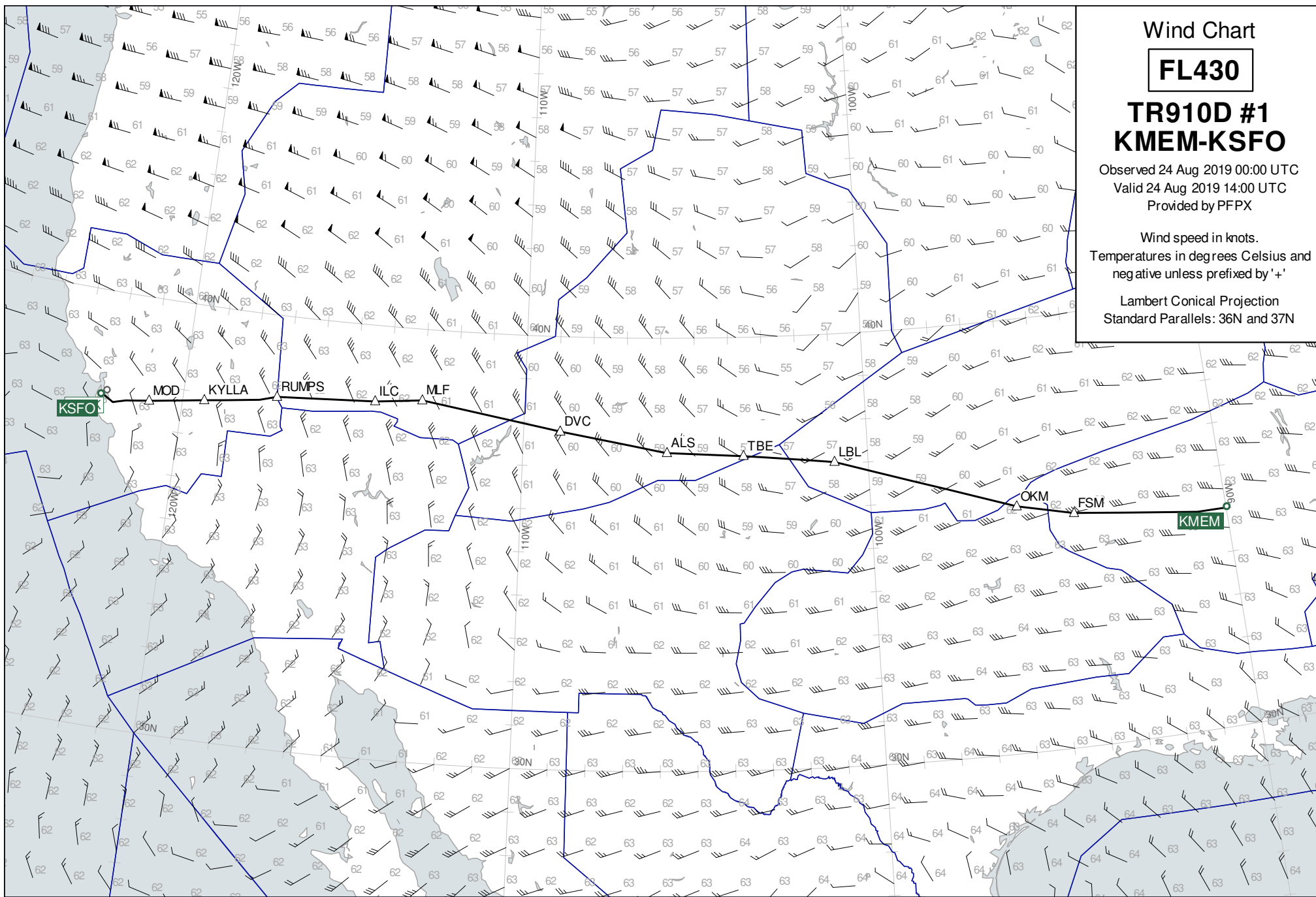
FL430

**TR910D #1
KMEM-KSFO**

Observed 24 Aug 2019 00:00 UTC
Valid 24 Aug 2019 14:00 UTC
Provided by PFPX

Wind speed in knots.
Temperatures in degrees Celsius and
negative unless prefixed by '+'

Lambert Conical Projection
Standard Parallels: 36N and 37N



Wind Chart

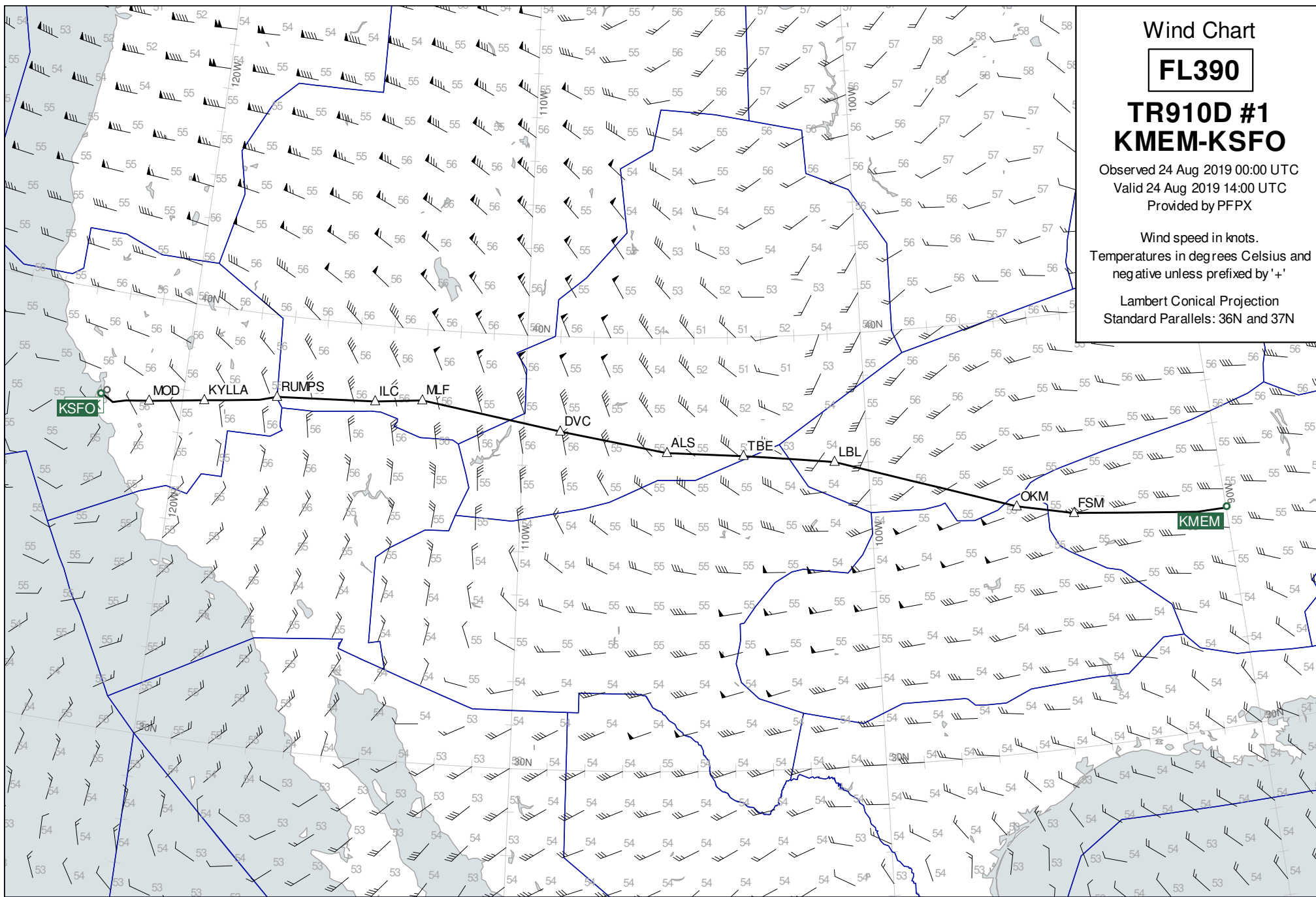
FL390

**TR910D #1
KMEM-KSFO**

Observed 24 Aug 2019 00:00 UTC
Valid 24 Aug 2019 14:00 UTC
Provided by PFPX

Wind speed in knots.
Temperatures in degrees Celsius and
negative unless prefixed by '+'

Lambert Conical Projection
Standard Parallels: 36N and 37N



Wind Chart

FL470

TR910D #1 KMEM-KSFO

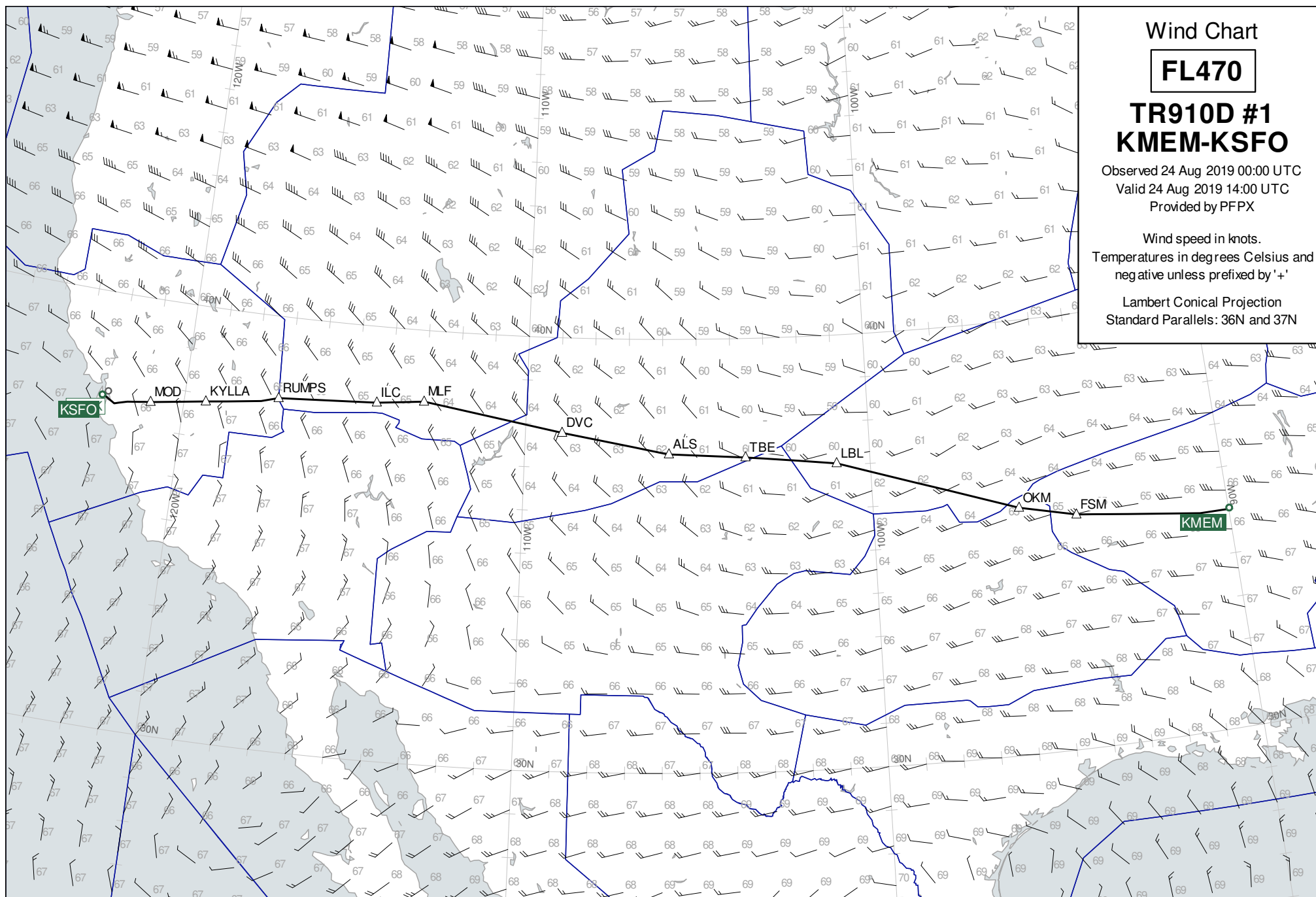
Observed 24 Aug 2019 00:00 UTC

Valid 24 Aug 2019 14:00 UTC

Provided by PFPX

Wind speed in knots.
Temperatures in degrees Celsius and
negative unless prefixed by '+'

Lambert Conical Projection
Standard Parallels: 36N and 37N



Destination Area

15000

TR910D #1
KMEM-KSFO

Observed 24 Aug 2019 00:00 UTC

Valid 24 Aug 2019 16:00 UTC

Provided by PFPX

Wind speed in knots.

Temperatures in degrees Celsius and
negative unless prefixed by '+'

Lambert Conical Projection
Standard Parallels: 36N and 40N

